





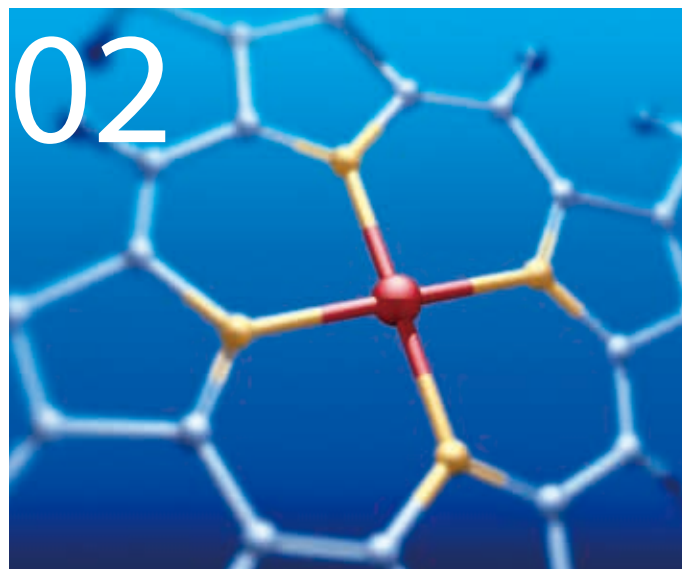
为城市构筑未来
BUILD THE CITY FUTURE

目录 CONTENTS



顺势而为 FORWARD-STRATEGIC

关于绿地集团 About Greenland Group	04
关于绿地城市投资集团 About Greenland Municipal Investment Group	06



链动发展 CONNECTED

基础设施投资 Infrastructure Investment	10
区域综合开发和城市更新 Regional Development & Renewal	20
工程施工 Project Construction	26
模块化、体系化投融资支撑 Financing	40



筑梦前行 VISION

企业文化
Corporate Culture

45

企业愿景
Corporate Vision

45



行稳致远 TARGET

企业资质
Qualifications

48

公司主要荣誉
Honors

50

顺势而为 打造大基建发展平台

FORWARD-STRATEGIC

TO CREATE A SOLID INFRASTRUCTURE DEVELOPMENT PLATFORM

绿地集团抓住国家鼓励社会资本通过 PPP 模式参与基础设施投资建设的机遇，顺势而为，高瞻远瞩地把大基建战略作为转型发展的三大战略之一，改组成立绿地城市投资集团，通过资本运作完善大基建企业网络，打造大基建发展平台，铸造集团转型发展的新引擎。

Thanks to a series of policies the State has unveiled in recent years to encourage social capitals to participate in the investment and construction of infrastructure in PPP mode, Greenland Group takes full advantage of such opportunity and shows great foresight to take large infrastructure strategy as one of the three strategies for transformation development, reorganizes and establishes Greenland Municipal Investment Group, striving to create a large & solid infrastructure development platform and casting new engine for .transformation development of the Group through improvement of large infrastructure enterrpise network via capital.

01



关于绿地集团

绿地城市投资集团的母公司——绿地集团是一家全球经营的多元化企业集团，创立于 1992 年 7 月 18 日，总部设立于中国上海，在中国 A 股实现整体上市（600606.SH），并控股多家香港上市公司。绿地目前已在全球范围内形成了“以房地产开发为主业，大基建、大金融、大消费等新兴产业并举发展”的多元经营格局，实施资本化、公众化、国际化发展战略，旗下企业及项目遍及全球四大洲十国百城，绿地连续五年蝉联《财富》世界 500 强，在以房地产为主业的企业中位居首位。绿地正努力成为一家主业突出、多元发展、全球经营，产业与资本双轮驱动，并在房地产、金融、地铁等若干行业具有领先优势的跨国公司，真正从“中国的绿地”成长为“世界的绿地”。

About Greenland Group

Greenland Group, parent company of Greenland Municipal Investment Group, is a diversified enterprise group with global operations, which was founded on July 18, 1992 and headquartered in Shanghai, China. It has realized overall listing of A-share in China (600606.SH), and holds several Hong Kong-listed companies. At present, Greenland has formed a diversified business structure of "real estate development-oriented as well as integrated development of emerging industries including large infrastructure, finance and consumption" on a global scale. Moreover, it implements a development strategy of capitalization, publicization and internationalization, with its subsidiaries and projects spreading over hundreds of cities in various foreign countries of the four continents. Besides, it has ranked in 2016 Fortune Global 500 for a continuous five year and selected as No. 1 among real estate-oriented enterprises. Greenland is striving to become a multinational corporation with main business orientation, diversified development, global operation and dual-wheel driving of industry & capital as well as taking leading advantages in such industries as real estate, finance and metro, thus truly developing from "China Greenland" to "World Greenland".



关于绿地城市投资集团

绿地城市投资集团是绿地集团的全资子公司，是绿地集团大基建板块的主要投资平台、管理协调平台、资源调配平台以及项目实施通道之一。通过 PPP、BOT 等模式，积极投身于城市基础设施和社会公共服务项目的投资建设，协同绿地城建、贵州建工、江苏省建、博大绿泽、绿地森茂等绿地大基建企业群，共同打造业务范围覆盖项目策划 - 规划设计 - 整体开发 - 融资支持 - 总包管理 - 施工建造 - 运营维护 - 建筑更新等建筑全产业链和全生命周期，具备央企实力、引领行业发展的“中绿建”。

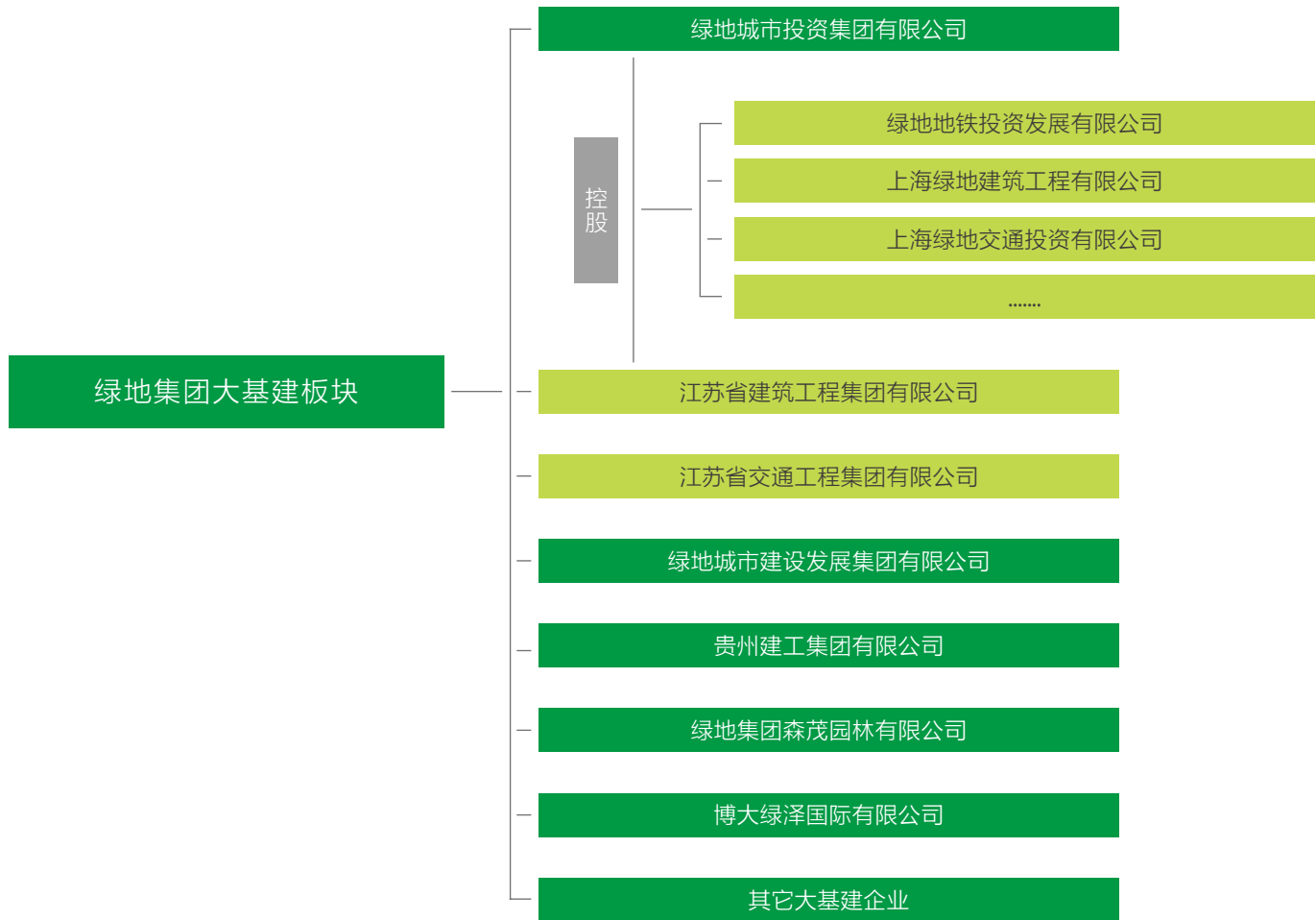
About Greenland Municipal Investment Group

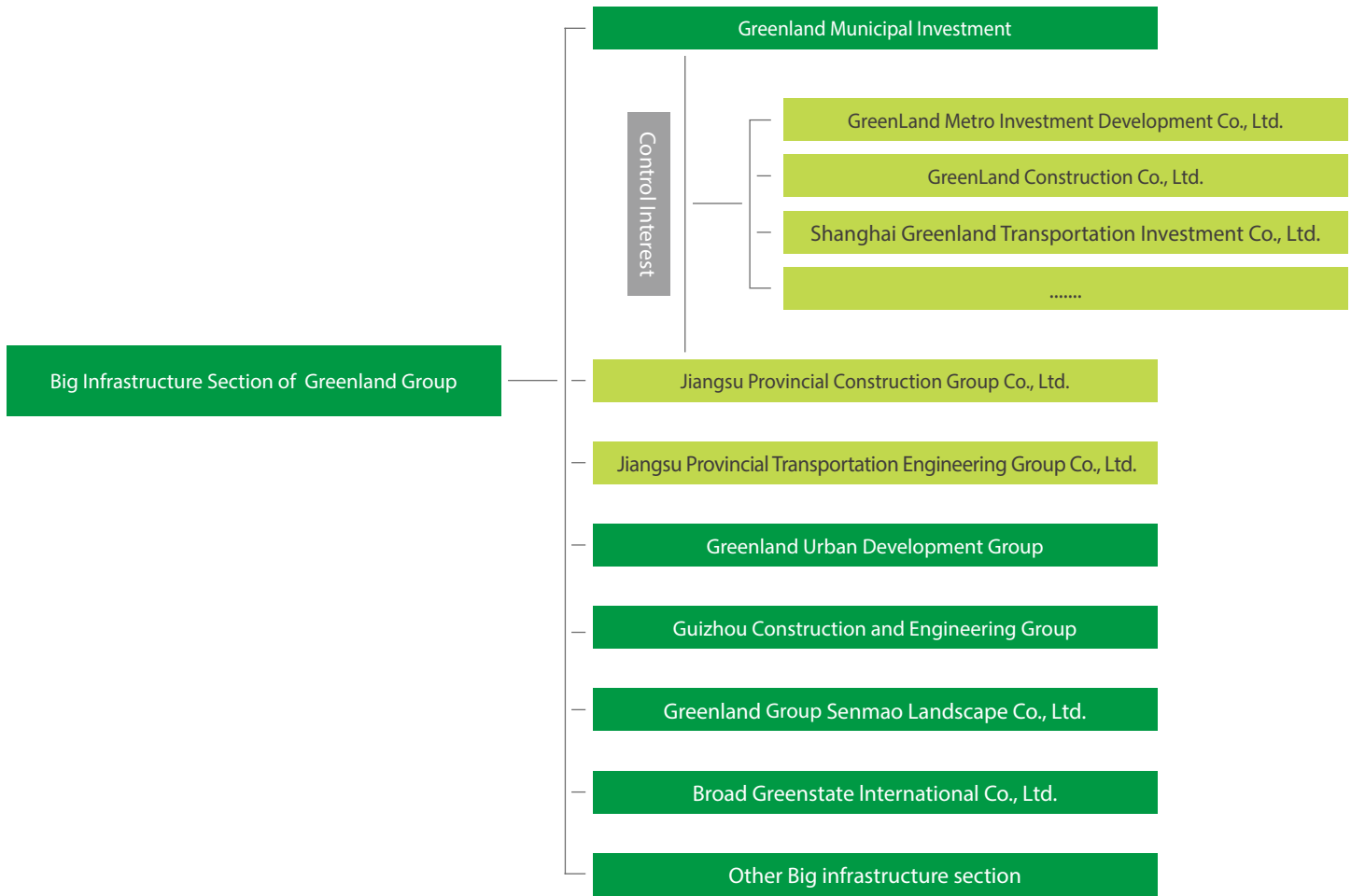
Greenland Municipal Investment Group, with registered capital of RMB 9.5 billion, is a wholly-owned subsidiary of Greenland Group and also an important infrastructure investment platform, management coordination platform, resource-distribution platform and project implementation channel for Greenland Group, to realize large infrastructure strategic objective of 300-500 billion within 3-5 years. Adhering to the tenet "Greenland, Better Life", it has actively participated in investment and construction of urban infrastructure and social public service projects, and cooperated with large infrastructure enterprise clusters under Greenland such as Greenland Urban Development Group, Guizhou Construction, Jiangsu Construction, Broad Greenstate and Greenland Senmao, etc. to co-create a strong and leading "China Greenland Construction" with abundant capacity of central enterprises and businesses covering overall industrial chains of "project planning-planning design-overall development-financing support-main contractor management-construction & building-operation & maintenance-building renewal" and whole life cycle.



绿地大基建板块架构

Structure of Solid and Large infrastructure Plate in Greenland





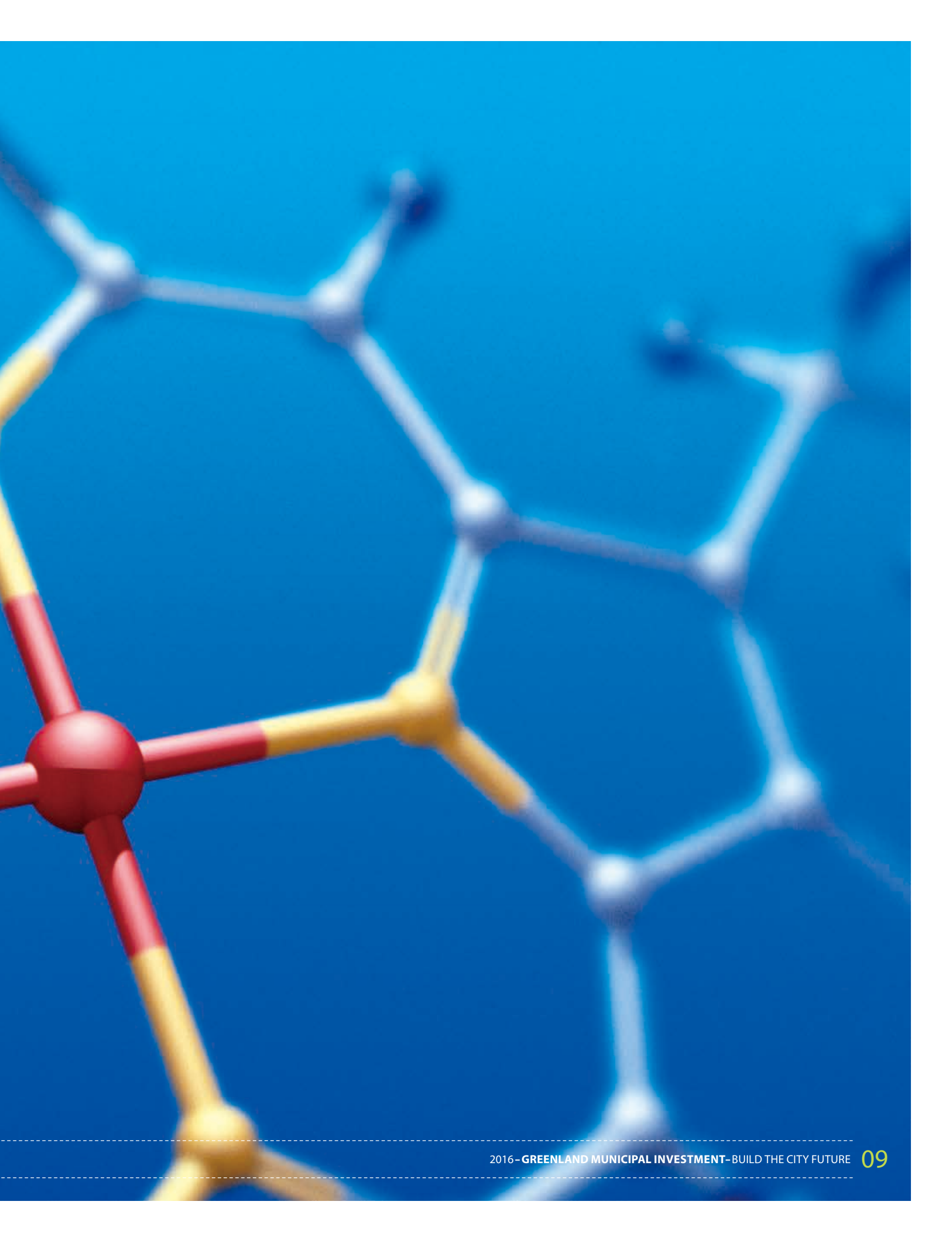
链动发展 构筑完整产业生态

CONNECTED
TO FORGE OVERALL INDUSTRIAL ECOLOGY SYSTEM

绿地城投集团秉持资源杠杆型、产业链动型、资本市场型的“三型”发展理念，以及“投资+施工”的“2+X”发展模式，谋求通过资源的整合，形成产业链动优势，构筑完整的基础设施产业生态。

By strictly adhering to the development philosophy of "Three Types", namely resource leverage, industrial chain and capital market, as well as "2+X" development mode of "Investment + Construction", Greenland Municipal Investment Group seeks to forge industrial chain advantage through resource integration, and create a whole industrial ecology system.

02



基础设施投资

Infrastructure Investment





道路交通： 承担高速公路、轨道交通、城市高架路、市政道路等道路交通工程的投资建设。

生态园林： 承担植物园、湿地公园、森林公园等项目的投资建设。

市政管网： 承担供水、排水、供电、通信、供煤气、供热等专业管线及城市地下综合管廊的投资建设。

水务环保： 承担给排水、污水处理、垃圾处理、流域综合整治等项目的投资建设。

Road traffic: The Group undertakes investment and construction on road traffic engineerings, such as highway, rail transit, urban viaduct and municipal roads, etc.

Landscaping: The Group undertakes investment and construction of projects such as botanical garden, wetland park and forest park.

Municipal pipe network: The Group undertakes investment and construction of professional pipeline and urban underground utility tunnel including water supply, water drainage, power supply, communication, gas supply and heating.

Water environmental protection: The Group undertakes investment and construction of projects including water drainage, sewage treatment, garbage treatment and integrated basin management.



南京地铁 5 号线项目 Nanjing Metro Construction Line 5

南京第一条采取 PPP 模式建设的地铁线。线路长 37.4 公里，
设 30 座车站，总投资约 200 亿元，计划 2020 年底建成通车。

It is the first metro line constructed by adopting PPP mode in Nanjing, with total mileage of 37.4 km and 30 stations set, achieving total investment of about RMB 20 billion. It is designed to put into operation by 2020.

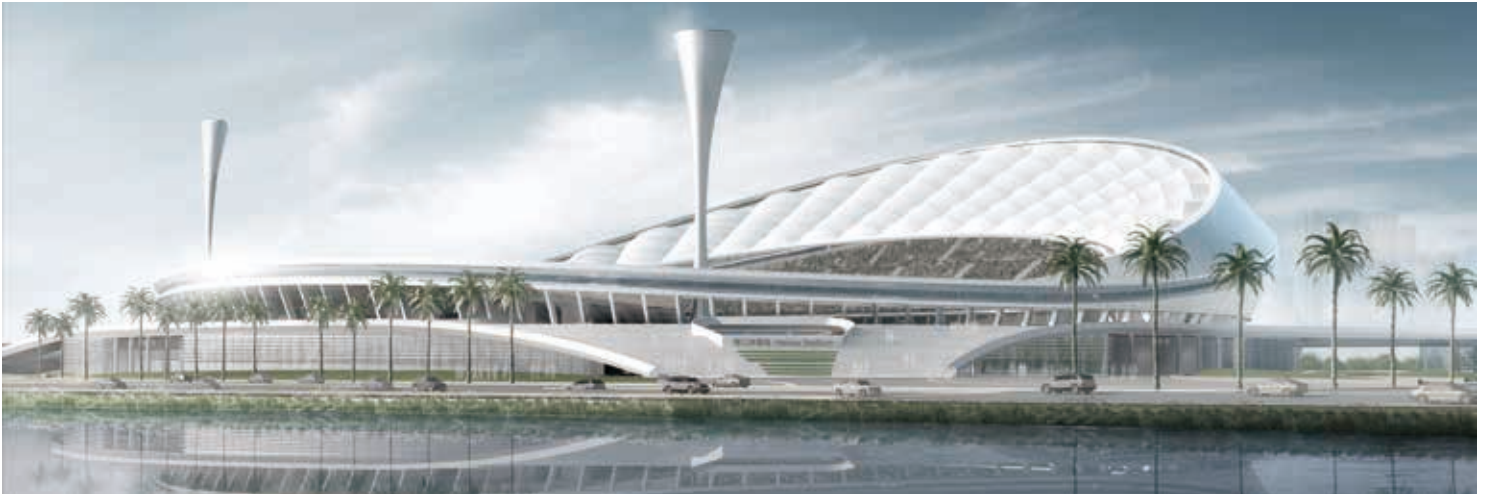




海口市文体中心项目 Haikou Municipal Culture & Sports Center Project

包括能容纳 40000 人的体育场、能容纳 12000 人的体育馆、游泳馆、网球中心等体育场馆以及博物馆、奥体公园、学校等项目，总投资约 40 亿。

Including a 40,000-seat stadium, a 12,000-seat stadium, a natatorium and a tennis center as well as a museum, an Olympic Park, schools and other projects, with total investment amount of about RMB 4 billion.



垣渑高速公路项目 Yuanqu-Mianchi Expressway Project

河南渑池至山西垣曲高速公路项目全长约 63 公里，包括 1.7 公里长黄河特大桥及 3 公里隧道，总投资 66.7 亿元。

The Yuanqu-Mianchi Expressway project is about 63 km long, including 1.5km Yellow River Super Large Bridge and 3 km tunnel, with total investment of RMB 6.67 billion yuan.





息邢高速公路项目 Xixian-Xingji Expressway Project

淮滨至信阳高速公路息县至邢集段按照双向四车道高速公路标准建设，项目全长约 101 公里，估算总投资约 68 亿元。

The Xixian-Xingji section of Huaibin-Xinyang Expressway shall be constructed to be bi-directional and four-lane expressway, with total length of about 101 km and estimated total investment of approximately RMB 6.8 billion yuan.



57
亿元
RMB
5.7
Billion
总投资
The total investment



银川滨河黄河大桥 Yinchuan Binhe Yellow River Bridge

项目总投资 57 亿元，黄河大桥主桥为目前国内最大跨度多塔连跨（三塔四跨）双锁钢混叠合自锚式悬索桥。

The total investment of this project reaches RMB 5.7 billion yuan, and the main bridge of Yellow River Bridge is the multi-pylon (3-pylon 4-span) double-lock steel-concrete composite self-anchored suspension bridge with the longest span in China now.

太原植物园一期工程 PPP 项目 Taiyuan Botanical Garden Phase I Project PPP Project

占地 1829 亩，投资 23.5 亿元，主要建设内容包括绿化工程、水体工程、园路工程、配套建筑及设施、综合管网工程等。项目建设期 3 年，运营期 11 年。

Covering an area of 1,829 mu with investment amount of RMB 2.35 billion. It mainly focuses on the construction of landscape engineering, water body engineering, garden path engineering, assorted buildings as well as facilities and overall pipe network projects, with construction period of 3 years and operation period of 11 years.



西安浐河湿地公园项目 Xi'an Juehe River Wetland Park Project

占地 2634 亩，计划总投资 11.8 亿元，主要建设内容包括造湖、堆山、湿地恢复、景观绿化、雕塑小品、广场建设等。项目建设期 2 年，运营期 8 年。

Covering an area of 2,634 mu with investment amount of RMB 1.18 billion. It mainly focuses on the construction of artificial lakes and mountains, wetland restoration, landscape planning, sculpture-sketching and square.



丽水华东药用植物园（丽水植物园） 核心区工程 East China Medicinal Botanical Garden (Lishui Botanical Garden) Core area engineering

该项目一期投资 7.9 亿，采用 PPP 模式，建设期 3 年，运行期 12 年。

The project phase I witnesses an investment amount of RMB 790 million by adopting PPP model, with construction period of 3 years and operating period of 12 years.



区域综合开发和城市更新

Regional Development & Renewal





受城市政府委托，采取 PPP、BOT、EPC 等模式，对城市特定区域进行综合开发，包括土地一级开发、城市级基础设施和公建配套投资建设、产业园区开发建设和产业投资等。

基于生态、生产、生活融合发展理念，运用互联网思维和金融杠杆，对旧工业区、旧商业区、旧住宅区、棚户区、城中村等区域进行更新改造，专注于打造能够延续城市文脉的城市新坐标、专注于建设智能互联新型居住社区、专注于建设产城融合的现代产业园区。

Entrusted by city government, the Group adopts various patterns including PPP, BOT and EPC, to comprehensively develop some special areas in the city, including first-class land development, investment and construction of city-class infrastructure and necessary public facilities, development-construction and industry investment of industrial park, etc.

Based on the concept of integrating ecological-economic-social integration development, the Group applies internet thinking and finance leverage to conduct regional renewal including old industrial district, old commercial district, old residential district, shanty towns and urban village, and focuses on creating new symbol of preserving the city's historical and cultural tradition, constructing smart and connected new residential community, and building modern industrial park of industry-city integration.

宁波杭州湾新区综合开发项目 Ningbo Hangzhou Wan New Urban Project

通过 PPP 和直接投资方式，全面参与 76 平方公里范围内的城市规划设计、基础设施和公共服务设施建设、产业投资、招商引资等工作，预计总投资额 500 亿元。

By way of PPP mode and direct investment, the Greenland entirely takes part in urban planning & design, infrastructure and public service facility construction, industry investment, investment attraction and other projects within the scope of 76 square kilometers. Is expected to total investment of about 50 billion yuan.

500 亿元
RMB
50
Billion
总投资
The total investment





南昌旧城改造项目 Nanchang Urban Renewal Project

项目规划总建筑面积 132 万平方米, 包含了住宅、综合商业、办公、学校、幼儿园、道路、公共停车场等完整的配套设施, 是集宜居、宜商、宜业、宜游为一体的多功能、综合性住宅小区, 该项目规模为全国在建的旧城改造之最。

The planned total construction area for this project was 1,320,000 square meters, including perfect supporting facilities such as residential building, integrated commercial building, office building, school, kindergarten, roads and public parking lot. It's a multi-functional comprehensive residential community suitable for living, commerce, working and travel. This project features the largest scale among old city renewal projects under construction across China.



上海大宁中心广场（二期） Shanghai Daning Central Plaza (Phase II)

项目位于闸北区中部，紧邻大宁灵石公园及“多媒体谷”，园区占地 128 亩，总建筑面积 11.3 万平方米，系目前上海面积最大的创意产业园区。

This project was in the central part of Zhabei District, close to Daning Lingshi Park and "Multimedia Valley", covering an area of 128 mu. With a total construction area of 113,000 square meters, it's currently the largest creative industrial park in Shanghai.



项目位于景德镇宇宙瓷厂区内，通过合理保留、利用、改造及更新，在展示原有生产流程、特色陶艺及特色厂房建筑的基础上，植入新的城市功能，改建后将成为集餐饮、创意办公、商业、旅游、休闲等功能于一体的区域中心。

This project was in Jingdezhen Yuzhou Porcelain Factory, which implanted new urban functions on the basis of presenting original production process, special pottery and special factory buildings through reasonable reservation, utilization, transformation and renewal, rebuilding it to be a regional centre integrating catering, creative office, commerce, travel and leisure.



景德镇近现代陶瓷工业遗产综合保护开发项目 Comprehensive protective development of Jingdezhen modern ceramic industrial heritage

工程施工

Project Construction





公司具备强大的工程施工能力，承担市政道路、高速公路、隧道、桥梁、园林绿化等基础设施类项目以及工业和民用建筑项目的施工，业务范围遍布全国各地及亚洲、美洲、非洲、大洋洲等 30 多个国家和地区。

The Group is featured in strong capacity of engineering construction and undertakes the construction of such infrastructure projects as municipal administration path, highway, tunnel, bridge and landscape planting as well as industrial and civil building projects, with business scope spreading over China and other 30 foreign countries and regions in Asia, Americas, Africa and Oceania.

市政项目

Municipal Projects

■ 地铁站点

Metro Construction

参与了上海地铁 1 号线富锦路站，2 号线广兰路站、唐镇站，3 号线虹口足球场站，11 号线隆德路站、嘉定北站、南翔站、白银路站等 9 个地铁站点的施工。

The Group has participated in the construction of 9 subway stations including Fujin Road Station of Shanghai Metro Line 1, Guanglan Road Station and Tangzhen Station of Line 2, Hongkou Football Stadium Station of Line 3, Longde Road Station, Jading North Station, Nanxiang Station, Baiyin Road Station of Line 11.



■ 苏通长江公路大桥
Suzhou-Nantong Yangtze River
Highway Bridge

参建的苏通长江公路大桥荣获中国工程鲁班奖。

Suzhou-nantong Yangtze River Highway Bridge was awarded "Luban Prize" (the top prize for construction peoiect quality in China).



■ 上海青浦西大盈港双桥
Shanghai Qingpu Distuict
Xida Yinggang Twin Bridge

上海青浦城区拓展后的重要地标。该桥主桥全长 202 米，单幅主桥宽度 26 米，主桥为中承式无推力拱桥。

It is a major project and a critical landmark with the expansion of Shanghai Qingpu's rural area. Located on the main road which connects Qingpu New District and Zhujiajiao, the bridge has a length of 202 meters. The single width of the main bridge is 26 meters, which is a half-through arch bridge without thrust.



■ 沪宁高速公路
Shanghai-Nanjing Expressway



■ 泰州长江公路大桥
Taizhou Yangtze River Highway Bridge



■ 郑州绿地高铁站前广场 Zhengzhou Greenland High-speed Rail Station Square

郑州绿地高铁站前广场建成后将是一个集交通枢纽、商务贸易、文化娱乐为一体的都市综合体，为郑东新区、郑州在中原地区树立了标志性形象。

Zhengzhou Greenland High-speed Rail Station Square will become an urban complex with an integration of transportation junction, commerce, trade, culture and entertainment when it is completed. The overall new image of Zhengzhou will be highlighted and improved, which further helps Zhengdong New District and Zhengzhou City establish a symbolic new image in Central Plains.



南京南站位于南京市南部新城核心区，是全国铁路客运特等站，连接 8 条高等级铁路的国家铁道枢纽站，南京南站占地近 70 万平方米，总建筑面积约 45.8 万平方米，其中主站房面积 28.15 万平方米，是亚洲第一大火车站和亚洲第一大高铁站。

Located in the core zone of the new town in the southern Nanjing, Nanjing South Station is the top-class station of the national railway transport of passenger. As the national railway junction station, it connects 8 first-rate railroads, and has a land area of 700,000 m² and a total GFA of 458,000m². The main building has an area of 281,500m², making it the largest railway station and largest high speed rail station of Asia.



■ 南京南站综合枢纽南北高架落客平台联络道钢结构工程 Nanjing South Station Comprehensive Junction North-south Elevated Roads Dropping-off Platform Linking Taxiway Steel Structure Project

生态园林项目 Municipal Projects

- 上海国际汽车城 国际赛车场
Shanghai International Automobile
City International Circuit



- 上海世博园
Shanghai Expo Site



- 福建泉州海上丝绸之路艺术园林
亚洲园
Maritime Silk Road Art Park Asia
of Quanzhou, Fujian

项目位于泉州台商投资区百崎湖东片区，项目规模 90 万平方米。

Project located in East District, Baiqi Lake, Taiwanese Investment Zone, Quanzhou. Project scale 900,000m².



■ 上海嘉定紫气东来公园
Ziqi Donglai Park of Jiading, Shanghai

项目位于上海嘉定新城中心区，项目规模 34.9 万平方米。项目荣获 2012 年优秀园林绿化工程金奖。

Project located in Central Area of Jiading New City, Shanghai. Project scale 349,000m². Project awarded 2012 Golden Prize of Excellent Landscaping Project.



■ 河南禹州神垕镇老街
Traditional Street Ancient Shenhou
Town of Yuzhou, Henan

项目位于河南省禹州市神垕镇，项目规模 8.3 万平方米。

Project located in Shenhou Town, Yuzhou City, Henan Province. Project scale 83,000m².



■ 浙江安吉栖居竹世界
Dwelling Bamboo World of Anji,
Zhejiang

项目位于中国浙江，项目规模 7500 平方米。

Project located in Zhejiang Province, China. Project scale 7,500m².



民用及工业建筑项目

Civil Construction & Industrial Buildings Project

■ 江苏淮安周恩来纪念馆 Zhou Enlai Memorial of Huai'an , Jiangsu

项目位于周恩来总理故乡淮安楚州，占地面积4万多平方米。工程获国家优质工程特别鲁班奖。

This project is located in the hometown of Premier Zhou Enlai in Chuzhou, Huai'an, Jiangsu Province, covering an area of over 40,000m². This project has won "National Excellent Quality Project, Special Luban Award".



■ 江苏南京图书馆新馆 Library-New Building of Nanjing, Jiangsu

中国第三大图书馆，
工程获国家优质工程鲁班奖。

The third-largest library in China. The project has won Luban Award of National Excellent Quality Project.



■ 郑州国际会展中心 Zhengzhou International Convention and Exhibition Centre (ZZICEC)

郑州郑东新区三大标志性建筑之一，建筑高度300米，总建筑面积25万平方米。

One of the three landmark buildings in Zhengdong New District, Zhengzhou, Henan, with height of 300m and a total construction area of 250,000m².



■ 上海绿地海珀 Shanghai Greenland Oceanic Amber

总建筑面积30万平方米，项目中的绿地总部大楼和金融A座获得上海白玉兰奖。

Total construction area of 300,000m², Greenland Headquarters Building and Building A, Finance Centre in the project won the Shanghai Magnolia Award.



■ 上海市北工业新区 Shanghai North Industrial New Area

建筑面积12万平方米，框剪结构，荣获上海市政府重点工程、文明工地、优质结构工程、双观摩工地，获江苏省扬子杯。

A construction area of 120,000m², its frame-shear wall structure won Jiangsu Yangzi Cup Awards, and has been awarded as key project of Shanghai Municipal Government, civilized construction site, quality structure project and double observation site.



■ 马来西亚 BOTANIKA 项目
The BOTANIKA Project in Malaysia

BOTANIKA 住宅项目位于新山 Tebrau 河岸边，与新加坡隔水相邻。总建筑面积为 13 万平方米，合同总价折合人民币 3.2 亿元。

Located by the riverside of Tebrau in Johor Bahru, BOTANIKA residential project sees Singapore across the river. With a GFA of approximately 130,000m², the contract price of the project equivalent to RMB 320 million.



■ 绿地马来西亚 TEBRUN 项目 Greenland Malaysia TEBRUN Project

为绿地集团在马来西亚开发的体量最大的项目，建筑面积 120 万平方米，包括公寓、购物中心、办公楼、酒店等大型一站式购物中心。

It's the largest project that Greenland Group develops in Malaysia, with a construction area of 1,200,000m², which is a large one-stop shopping centre including apartment, shopping mall, office building and hotel.



■ 马来西亚登嘉楼度假村酒店项目 Malaysia Terengganu Holiday Resort Hotel

总建筑面积约为 2.74 万平方米，是卡塔尔投资集团专项投资建造的一个连锁度假村。

A chain resort built with special investment of Qatar Investment Group, with a total construction area of about 27,400m².





■ 泰国普吉岛万豪酒店 Thailand Marriott Phuket Hotel

总建筑面积约 6.3 万平方米，包括一家三星级酒店和一家五星级酒店，为当地标志性建筑。

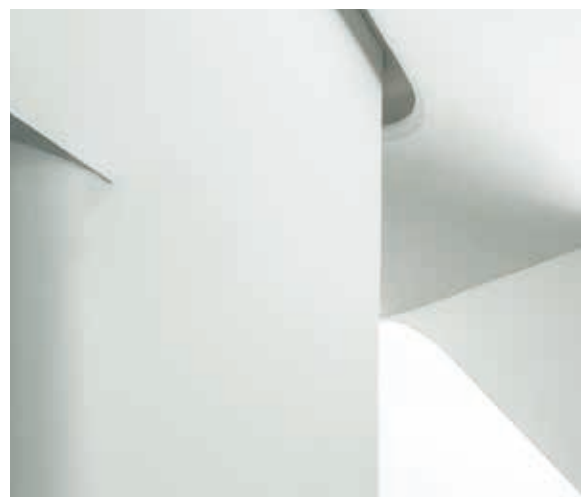
it's a local landmark building, with a total construction area of about 63,000 square meters, including a three-star hotel and a five-star hotel.

■ 援外项目 Foreign-aid Projects

公司承建了马尔代夫穆环礁连接公路项目、瓦努阿图国际会议中心、科特迪瓦外交部会议厅、刚果（金）金沙萨综合医院、菲律宾中菲农业技术中心项、圣卢西亚体育场、密克领导人官邸等多个援外项目。

The Group contracted to build many foreign-aid projects, such as the laamu Atoll Inteeconnection Highway in Maldives, Vanuatu International Conference Center, Conference Hall of the Foreign Ministry of Ivory Coast, Congo (DRC) Kinshasa General Hospital, China-Philippines Agricultural Technology Center, Saint Lucia Stadium and Micronesia Leader's Residence.





模块化、体系化投融资支撑 Financing

产融结合

积极响应国家对基础设施行业的政策支持，依托绿地集团强大的国企背景，为地方政府、公共财政、行业伙伴、金融机构等社会各方搭建产业与资本对接的平台，聚焦国内外重大 PPP 项目投资建设与运营，积极参与“一带一路”、国家级、省级各类产业基金的发起设立和运营，促进产融结合，实现产业延伸，为绿地集团实现经营转型、打造千亿级基建航母企业提供资本和智力支持。

投融联动

通过与国内外各政策银行、商业银行，保险机构、信托资管等广泛合作，从金融视角研究 PPP 模式在产业新城、基础设施、环保水务、清洁能源、智慧城市等细分领域的运用和实现；探索各类金融资管机构参与 PPP 项目的具体路径、形式和阶段；为不同投资领域项目设计标准化、模块化投融资支撑体系；从而实现投融资的有效联动和快速复制，为大基建板块未来成长提供重要驱动力。

资本运作

持续创新，智融结合，通过多渠道、多层次、多样化融资结构的搭建和组合，打造充满活力、能级不断提升的基建产业资本运作平台。以政府财力和地方信用为支点，以绿地品牌和影响力为依托，与银行、信托、保险、资管等机构建立广泛合作，

改造更新传统融资产品、开发符合重大 PPP 项目要求的专项金融产品。灵活运用融资租赁、永续债、类永续债、绿色债、投贷联动等金融工具，探索直投 PPP 项目未来在证券交易所发行证券、资产证券化、挂牌上市等直接融资的有效路径，发挥资本运作的杠杆带着效应，为集团大基建战略目标实现打开空间。

兼并收购

凭借雄厚资金实力和品牌影响力，快速推广绿地国企混改成功经验，积极参与国内省市级以上优秀基建企业集团的兼并收购和重组，探索引入养老金、险资等共同发起成立并购基金，集合各种优势资源，通过共享联动进行战略布局。加快对政府财力雄厚区域和 PPP 示范项目投资重地的渗透和突破，发挥资本杠杆带动效应，快速提升、凝聚绿地在基建行业中核心竞争力，逐步打造“中绿建”品牌。

未来展望

用 3 ~ 5 年时间，完成绿地集团大基建产业板块投资融资平台、资本整合平台、收购兼并平台的搭建，吸收国际国内各方资本资金来源，形成 3 ~ 5 个千亿级规模的产业基金，坚持创新、协调、开放、共享的发展理念，为绿色产业、重点民生、重大基础设施、城镇化发展等领域提供投资融资、项目运营、风险管理提供全方位的支持和服务。



Industry-Financing Integration

By actively adhering to national policy support to infrastructure and relying on strong background of being a state-owned enterprise—Greenland Group, the Group creates a docking platform of industry and capital for local government. Public finance institution. Industrial partners, financing institutions and other social parties, focuses on construction and operation of national and international key PPP project investment, actively participates in initiation, setting-up and operation of "One Belt One Road", national-level. Provincial-level industrial funds, so as to promote the integration of industry and finance, achieve industrial extension, thus providing capital and intellectual support for operational transformation of Greenland Group and development of creating infrastructure aircraft-carrier enterprises with over billions of capitals.

Investment-Financing Linkage

The Group has achieved extensive cooperation with foreign & domestic various policy banks, commercial banks, issuance institutions, trust & capital management companies, etc. study the application and realization of PPP mode in segment fields such as industrial new town, infrastructure, environmental protection & water utilities, clean energy and intellectual cities from the perspective of finance, explores specific paths, modes and phases of all kinds of financing & capital management institutions' participation in PPP project, and designs standardized and modular investment & financing supporting system for different investment projects, so as to realize effective linkage and quick deplication of investment & financing and provide important drive for future development of large infrastructure.

Capital Operation

By way of continuous innovation and integration of intelligence and financing, the Group creates an effective infrastructure industrial capital operation platform with improving levels through creation and combination of multi-channel, multi-layer and diversified financing structure. Besides, taking government finance and local credits as pivot and relying on Greenland brand and influence, the Group carries

out extensive cooperation with banks, trust, insurance institutions, capital management, etc., transforms and renew traditional financing products, develops special financial products in accordance with key PPP project, flexibly applies such financial tools as financing leasing, sustainable debts, similar sustainable debts, green debts, investment-leasing linkage, etc., explores effective paths of direct investment PPP projects in the issuance of securities in future stock exchange, assets securitization, listing and other direct financing, and gives leverage linkage effect of capital operation into full play, so as to open larger space for realizing Group's large infrastructure strategic goal.

Merger & Acquisition

By virtue of solid capital edge and brand influence, the Group quickly promotes its successful experience of mixed renovation of state-owned enterprises of Greenland, actively participates in M&A and reorganization of national-level, provincial-level and municipal-level excellent infrastructure enterprises, explores mutual initiating & establishing merger funds by introduction of capitals and insurance capitals, integrates various kinds of superior resources, accelerates permeation and breakthrough of key financial areas of government as well as PPP demonstration project investment areas via sharing linkage for strategic layout, and gives capital leverage driving effect into play, in order to rapidly enhance and cohere the core competitiveness of Greenland in large infrastructure industry and gradually create "China Greenland Construction" brand.

Future Prospect

The Group will complete the construction of investment & financing platform, capital integration platform and M&A platform for large infrastructure industry sections of Greenland Group by spending 3-5 years, attracts national and international capital resources from various parties, in order to form 3-5 over-billion-capital industrial funds; in addition, it adheres to the development idea of innovation, coordination, opening and sharing, and provides investment & financing, project operation, risk management and all-round support and services for green industry, key civil projects, major infrastructure and urbanization development, etc.

筑梦前行 超越梦想引领发展

VISION

SURPASS THE DREAM AND MAKE ACHIEVEMENTS

坚持“做政府所想、为市场所需”，绿地城投集团发展探索的步伐将永不停息、永不止步，围绕千亿级“企业梦”的实现，致力于实现社会进步、客户满意、企业发展、员工成长的多方共赢，引领城市创享升级，共享美好生活。

By following "what the government advocates and what the market calls for", Greenland Municipal Investment Group never stops its pace of development and exploration. Focusing on the realization of billion-level "Enterprise Dream", it's committed to realizing win-win of multiple parties, such as social progress, customer satisfaction, enterprise development and employee growth, leading urban upgrading and sharing a beautiful life.

03







企业文化 Corporate Culture

核心价值观：卓越、发展、责任

Core values: Excellence, Development, Responsibility

一个宗旨
One purpose

绿地，让生活更美好
Greenland makes life better

两个永不
Two never

永不满足、思变图强；永不止步，争创一流
Never satisfied but plan for change and strive to be strong,
Never stop but race to the top

三新理念
Three New Concepts

把握新形势、运用新思维、寻找新动力
Master new situation, apply new thinking, seek new impetus

四个面向
Four Orientations

面向股东、面向客户、面向员工、面向社会
Shareholder-oriented, customer-oriented, staff-oriented,
society-oriented

使命与愿景 Corporate Vision

2020 年前，绿地集团大基建板块实现 4000 亿元以上的业务规模，推动“中绿建”跻身国内建筑业最具竞争力和影响力的建设产业集团联合体，以及国内引领行业发展的龙头企业之一，铸就绿地集团产业延伸的新引擎。

Greenland Group will achieve business scale of over RMB 400 billion in terms of its large and solid infrastructure by 2020, promoting "China Greenland Construction" to be a construction industrial group joint union with the strongest competition and influence in construction industry in China as well as one of the industrial-leading enterprise across China, thus forging a new engine for industrial extension of the Group.

行稳致远

TARGET

依托绿地建筑工程有限公司、江苏省建筑工程有限公司、绿地城市建设发展集团有限公司、贵州建工集团有限公司等大基建企业多年的积累，绿地城投集团在工民建及基建领域形成了卓越的竞争优势，在国内形成了较强的品牌影响力。

Relying on many-year accumulation of Greenland Construction Co., Ltd. and Jiangsu Provincial Construction Co., Ltd., Greenland Municipal Investment Group has formed excellent competition advantages in the industrial-civil architecture and infrastructure areas, and has strong brand influence in China.

04



企业资质 Qualifications

公司拥有房地产开发壹级资质、建筑行业甲级设计资质，拥有 10 项施工总承包资质和数十项专业承包资质：

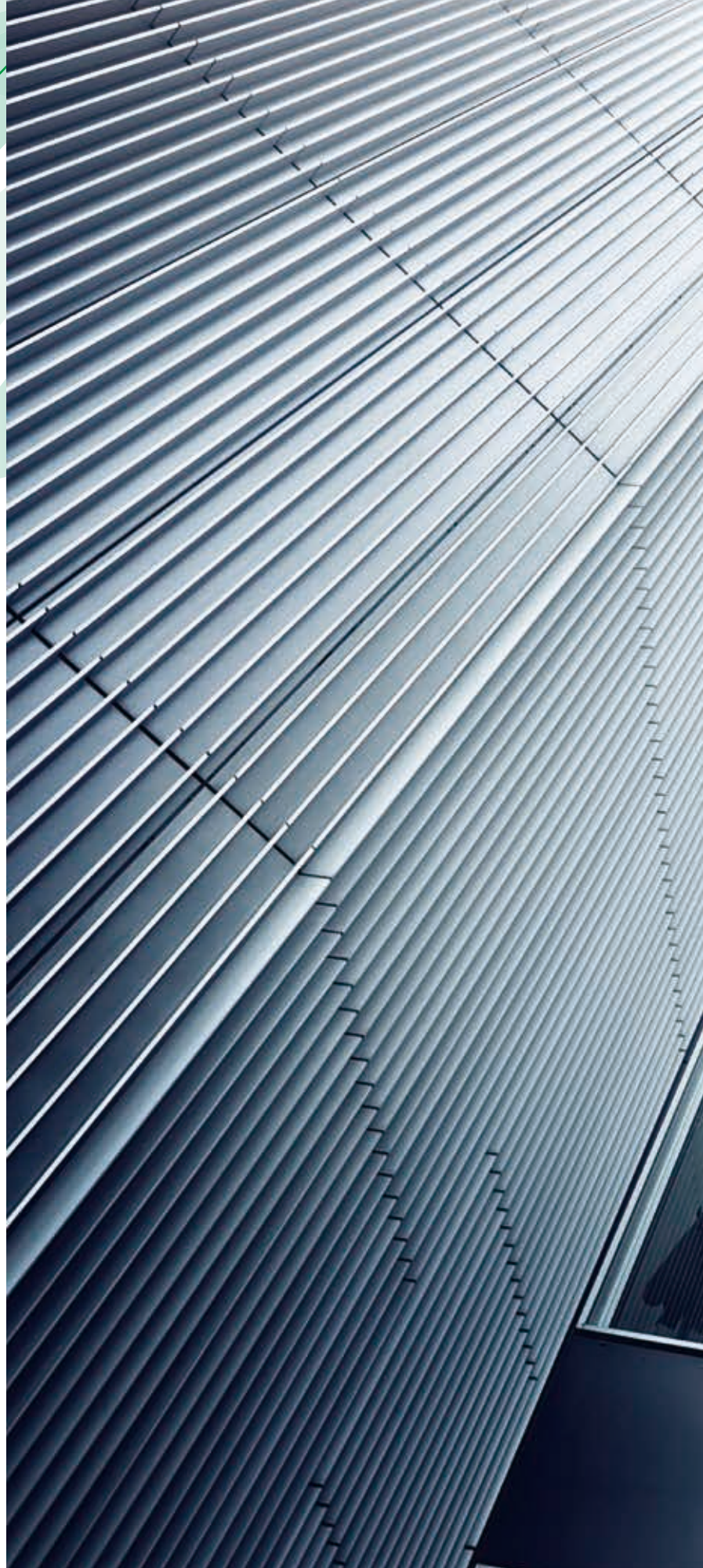
The Group owns Grade I qualification for real estate development, Grade-A design qualification for architecture, 10 construction general contracting qualifications and dozens of qualifications of professional contracting.

■ 总承包资质

- 房屋建筑工程施工资质
- 市政公用工程施工资质
- 机电设备安装工程施工资质
- 公路工程施工资质
- 矿山工程施工资质
- 冶金工程施工资质
- 水利水电工程施工资质
- 电力工程资质
- 铁路工程施工资质
- 风景园林工程设计专项甲级资质

General Contracting Qualification

- Housing building engineering construction-special grade
- Municipal public works construction-Grade I
- Mechanical and Electronic Equipment Installation Engineering construction- Grade I
- Road works construction -Grade I
- Mine engineering construction -Grade I
- Metallurgical engineering construction-Grade I
- Hydraulic and hydro-power engineering construction -Grade II
- Electrical power engineering -Grade II
- Railway engineering construction -Grade III
- Grade One Qualification of Landscape Architecture Engineering Desufn





■ 专业承包资质

- 建筑装饰装修工程资质
- 地基与基础工程资质
- 消防设施工程资质
- 建筑幕墙工程设计与施工资质
- 钢结构工程资质
- 防腐保温工程资质
- 机电设备安装工程资质
- 土石方工程资质
- 消防设施工程资质
- 管道工程资质
- 桥梁工程资质
- 隧道工程资质
- 环保工程资质
- 炉窖工程资质
- 建筑防水工程资质
- 建筑智能化工程设资质
- 化工石油设备管道安装工程资质

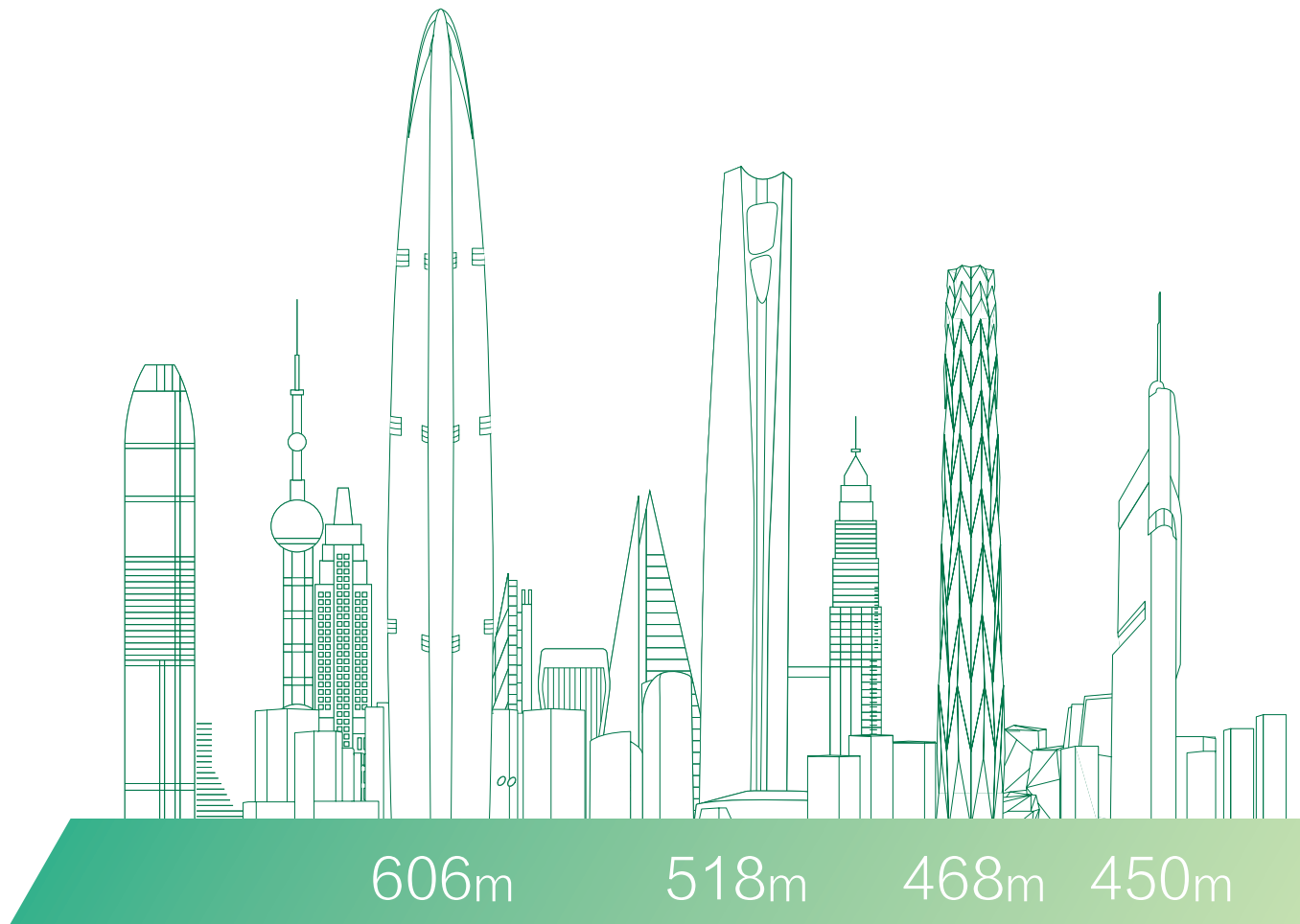
Professional Contracting Qualifications

- Building decoration engineering -Grade I
- Foundation and foundation engineering Grade I
- Fire-fighting facilities engineering -Grade I
- Building curtain wall engineering design and construction - Grade I
- Steel Structure Engineering -Grade I
- Anticorrosion and thermal-insulation engineering - Grade I
- Mechanical and electrical equipment installation engineering- Grade I
- Earthwork -Grade I
- Fire-fighting facilities engineering -Grade I
- Pipeline engineering -Grade II
- Bridge engineering -Grade II
- Tunnel engineering -Grade II
- Environmental engineering -Grade II
- Pit engineering -Grade II
- Building waterproofing engineering -Grade II
- Building intelligent engineering -Grade II
- Petrochemical equipment pipeline installation engineering -Grade II

公司主要荣誉 Honors

公司近年来获得了数百项各级荣誉，其中全国优秀施工企业、中国建筑工程鲁班奖等国家级荣誉数十项。

The Group has won hundreds of awards of various levels in recent years, including dozens of national honors such as National Excellent Construction Enterprise, China Construction Engineering - Luban Award.



■ 中国建筑工程鲁班奖 Lu Ban Awards for China Construction Project

序号 No.	获奖名称 Award Name	所属工程 / 项目 Engineering/Project
1	中国建筑工程特别鲁班奖 Lu Ban Awards for China Construction Project-Special	淮安周恩来纪念馆 Huai'an Zhou Enlai Memorial
2	中国建筑工程鲁班奖 Lu Ban Awards for China Construction Project	海南寰岛泰得大酒店 Hainan Huandao Tide Hotel
3	中国建筑工程鲁班奖 Lu Ban Awards for China Construction Project	南京图书馆新馆 Nanjing Library New Building
4	中国建筑工程鲁班奖 Lu Ban Awards for China Construction Project	高良涧复线船闸 Gaoliangjian Complex Line Lock
5	中国建筑工程鲁班奖 Lu Ban Awards for China Construction Project	沪宁高速公路江苏段 Shanghai -Nanjing Expressway, Jiangsu section
6	中国建筑工程鲁班奖 Lu Ban Awards for China Construction Project	江阴长江公路大桥 Jiangyin Yangtze River Hiway Bridge
7	中国建筑工程鲁班奖 Lu Ban Awards for China Construction Project	苏通长江公路大桥 Suzhou-Nantong Yangtze River Highway Bridge

■ 中国钢结构金奖 China Gold Award of Steel Structure

序号 No.	获奖名称 Award Name	所属工程 / 项目 Engineering/Project
1	中国建筑“钢结构金奖” China Architecture "Gold Award for Steel Structure"(National Excellent Quality Project)	上海青浦西大盈港桥钢结构工程 Shanghai Qingpu Xidaying Gang Bridge Steel Structure Engineering
2	中国建筑“钢结构金奖” China Architecture "Gold Award for Steel Structure"(National Excellent Quality Project)	上海世博会意大利馆钢结构工程 Shanghai World Expo Italy Pavilion Steel Structure Engineering
3	2013-2014 年度中国钢结构金奖 China Steel Structure Gold Awards 2013-2014	南京南站综合枢纽南北高架 落客平台联络道钢结构工程 Nanjing South Railway Station, Comprehensive Pivot, North-South Overhead/Drop Off Platform Taxiway Steel Structure
4	2013-2014 年度中国钢结构金奖 China Steel Structure Gold Awards 2013-2014	武进规划展览馆二期工程(莲花馆) Wujin Planning Exhibition Hall, Phase II Project (Lotus Pavilion)

公司主要荣誉

Honors

■ 全国市政金杯示范工程 National Municipal Gold Cup Model Project

序号 No.	获奖名称 Award Name	所属工程 / 项目 Engineering/Project
1	2011 年度“全国市政金杯示范工程” National Municipal Gold Cup Model Project 2011	上海浦东国际机场北通道 (申江路~主进场路)新建工程 Shanghai Pudong International Airport, North Passageway (Shenjiang Road~Main Approach Road) New Project

■ 中国土木工程詹天佑奖 China Tien-yow Jeme Civil Engineering Prize

序号 No.	获奖名称 Award Name	所属工程 / 项目 Engineering/Project
1	中国土木工程詹天佑奖 China Tien-yow Jeme Civil Engineering Prize	绿地清猗园 Greenland Qingyi Garden
2	中国土木工程詹天佑奖 China Tien-yow Jeme Civil Engineering Prize	沪宁高速公路江苏段 Shanghai-Nanjing Expressway, Jiangsu section
3	中国土木工程詹天佑奖 China Tien-yow Jeme Civil Engineering Prize	连云港至徐州高速公路 Lianyungang-Xuzhou Expressway
4	中国土木工程詹天佑奖 China Tien-yow Jeme Civil Engineering Prize	润扬长江公路大桥 Runyang Yangtze River Highway Bridge
5	中国土木工程詹天佑奖 China Tien-yow Jeme Civil Engineering Prize	宿迁至淮安公路 Suqian-Huai'an Highway

■ 全国建筑工程装饰奖 National Construction Decoration Award

序号 No.	获奖名称 Award Name	所属工程 / 项目 Engineering/Project
1	上海世博会工程全国装饰奖 (建筑装饰类) Shanghai World Expo Engineering National Decoration Award (Architectural decoration)	意大利馆装饰工程 Decoration works of Italy Pavilion
2	上海世博·公共建筑装饰类 全国建筑工程装饰奖 Shanghai World Expo, Public Building Decoration, National Construction Decoration Award	上海绿地卢湾滨江 CBD 项目 137A-4 地块商业金融 B (企业总部) Shanghai Greenland Luwan Binjiang CBD Project 137A-4 Parcel Business Finance B (Headquarters)

■ 三星级绿色建筑设计标识证书 CERTIFICATE OF GREEN BUILDING DESIGN LABEL

序号 No.	获奖名称 Award Name	所属工程 / 项目 Engineering/Project
1	三星级绿色建筑设计标识证书 CERTIFICATE OF GREEN BUILDING DESIGN LABEL	绿地总部大楼 Headquarters Building of Greenland
2	三星级绿色建筑设计标识证书 CERTIFICATE OF GREEN BUILDING DESIGN LABEL	常熟万中城公望花园 Gongwang Garden, Wanzhongcheng, Changshu
3	三星级绿色建筑设计标识证书 CERTIFICATE OF GREEN BUILDING DESIGN LABEL	北京绿地昌平未来科技城 Beijing Future Science Park, Changping District, Beijing, Greenland
4	三星级绿色建筑设计标识证书 CERTIFICATE OF GREEN BUILDING DESIGN LABEL	上海绿地新江湾名邸 New Jianwan City, Shanghai, Greenland
5	三星级绿色建筑设计标识证书 CERTIFICATE OF GREEN BUILDING DESIGN LABEL	江苏省建大厦 Jiangsu Provincial Construction Building
6	三星级绿色建筑设计标识证书 CERTIFICATE OF GREEN BUILDING DESIGN LABEL	宁波滨江 2 号 -1 地块项目 No. 2 Binjiang, Ningbo—Land 1 Project

■ 绿色能源与环境设计先锋奖 (LEED) Leadership in Energy & Environmental Design (LEED)

序号 No.	获奖名称 Award Name	所属工程 / 项目 Engineering/Project
1	绿色能源与环境设计先锋奖 (LEED) 金奖 Lu Ban Awards for China Construction Project-Special	上海市绿地 (集团) 总部大楼 Headquarters Building of Shanghai Greenland Group
2	三星级绿色建筑设计标识证书 CERTIFICATE OF GREEN BUILDING DESIGN LABEL	成都绿地中心 Chengdu Greenland Center
3	三星级绿色建筑设计标识证书 CERTIFICATE OF GREEN BUILDING DESIGN LABEL	南宁绿地中心 Nanning Greenland Center

公司主要荣誉

Honors

■ 中国地产设计大奖 REAL ESTATE DESIGN CHINA AWARD

序号 No.	获奖名称 Award Name	所属工程 / 项目 Engineering/Project
1	中国地产设计大奖 REAL ESTATE DESIGN CHINA AWARD for Landscape Design	绿地长岛 Greenland Long Island

■ 创新风暴奖 Innovation Brainstorm Award

序号 No.	获奖名称 Award Name	所属工程 / 项目 Engineering/Project
1	创新风暴奖 中国城市综合体创新典范 CERTIFICATE OF GREEN BUILDING DESIGN LABEL	兰州绿地智慧金融城 Smart Finance City of Lanzhou Greenland
2	创新风暴奖 中国智慧社区创新典范 CERTIFICATE OF GREEN BUILDING DESIGN LABEL	西咸绿地空港新城 Konggang New City of Xixian Greenland
3	创新风暴奖 中国产城融合创新典范 CERTIFICATE OF GREEN BUILDING DESIGN LABEL	重庆绿地国际贸易港城 Internationa; Trade Port City of Chongqing Greenland
4	创新风暴奖 中国青年置业优选项目典范 CERTIFICATE OF GREEN BUILDING DESIGN LABEL	抚顺绿地总部 Headquarters of Fushun Greenland
5	创新风暴奖 中国房地产创新典范 CERTIFICATE OF GREEN BUILDING DESIGN LABEL	长沙绿地海外滩 Overseas Bund of Changsha Greenland
6	创新风暴奖 中国房地产创新典范 CERTIFICATE OF GREEN BUILDING DESIGN LABEL	长沙绿地新都会 New Metropolis Changsha Greenland



 官方微信
Official WeChat

地址：上海市黄浦区日晖东路 483 号

邮编：200023

电话：(86-21) 63308886

传真：(86-21) 63309791

Add: No. 483 East Huangpu District Road, Shanghai

P.C. : 200023

Tel : (86-21) 63308886

Fax : (86-21) 63309791



本画册由环保纸张印刷

版权归绿地城市投资集团所有，未经许可不得转载和翻印

